

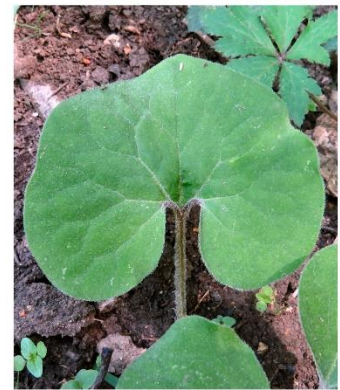
These are a few pages from my Dent County Blues book. This includes the blue, purple and brown flowers found in Dent County, Missouri.

Each page has the scientific name as found in "Flora of Missouri" by Dr. George Yatskievych, the common name(s), and photographs of the flower, back of the flower, stem, leaf, fruit or seedpod and plant. I took all of the photographs.

There are 175 plant pages in this book alone. Thirty-five of them are completed. I have most of the pictures for another dozen? More?

I have a long way to go.

Asarum canadense
Family: Aristolochiaceae
Wild Ginger



The leaf clusters in moist, shady places near big rocks are lovely. The flowers hide on the ground.



Symphotrichum novae-angliae
Family: Asteraceae Tribe: Astereae
New England Aster



These striking royal purple and gold flowers appear in late August.



Cichorium intybus
Family: Asteraceae Tribe: Cichoreae
Common Chicory, Blue Sailors



Edible early spring greens erupt into blue flowers providing bird seed all summer.



Lactuca floridana
Family: Asteraceae Tribe: Cichoreae
Florida Lettuce, Woodland Lettuce



A stout purple stalk rises up to eight feet crowned by a bush of blue flowers.



Vernonia arkansana
Family: Asteraceae Tribe: Vernonieae
Arkansas Ironweed, Curly Top



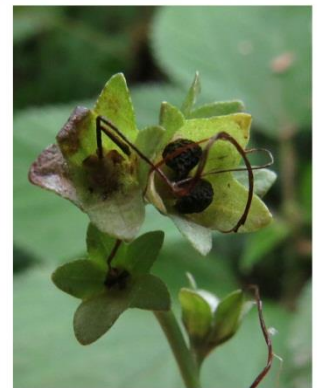
Look for the web of threads under the flowers to know this plant.



Mertensia virginica
Family: Boraginaceae
Virginia Bluebells, Cowslips



Look for these blue bouquets in ravines and river flood plains. They change from pink to blue.



Campanula americana
Family: Campanulaceae
Tall Bellflower



Early summer columns of blue flowers begin to open lighting up shady areas.



Amorpha canescens
Family: Fabaceae Subfamily: Faboideae
Lead Plant



*Rich, royal purple and gold revel
in the sun when this plant blooms.*



Erodium cicutarium
Family: Geraniaceae
Filagree Stork's Bill



The flowers may fool you, but the seed pod of this plant is unmistakable.



Lamium purpureum
Family: Lamiaceae
Dead Nettle



Early in spring bees enjoy nectar from these numerous flowers.



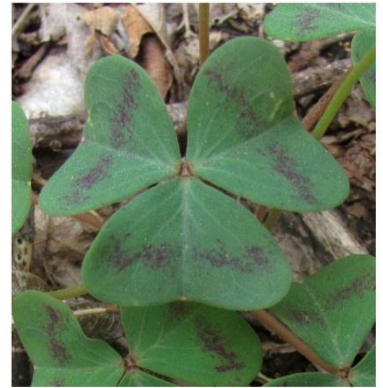
Scutellaria incana
Family: Lamiaceae
Downy Skullcap



These masses of purple flowers like shady places. Watch for the skutes.



Oxalis violaceae
Family: Oxalidaceae
Violet Wood Sorrel



Find these flowers scattered in open woods in the spring.



Passiflora incarnata
Family: Passifloraceae
Passion Flower, Maypops



*When the fruits turn orange,
a good, juicy pulp surrounds
the seeds.*



Polemonium reptans
Family: Polemoniaceae
Jacob's Ladder



These flowers may remind you of bluebells, but they lack the tube. They grow in shady, moist areas.



Primula meadia
Family: Primulaceae
Shooting Star



Ranging from white to blue, these flowers are unmistakable.



Verbena hastata
Family: Verbenaceae
Blue Vervain



These brilliant flowers are worth wading to see.



Viola pedate
Family: **Violaceae**
Bird's Foot Violet



*This big violet comes in two colors:
royal purple or dreamy lavender.*

